



WESTBOW HOMES

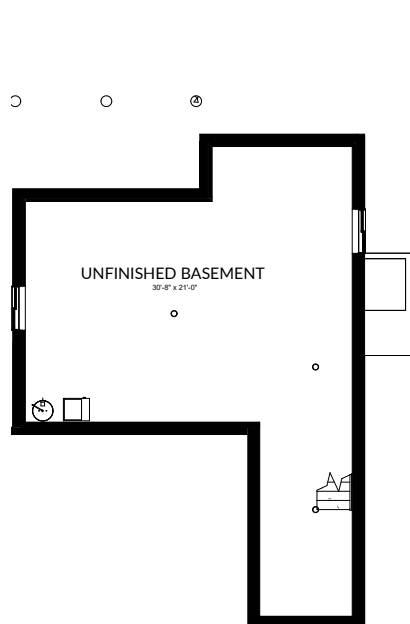
AT ASPEN RIDGE

LOT
20

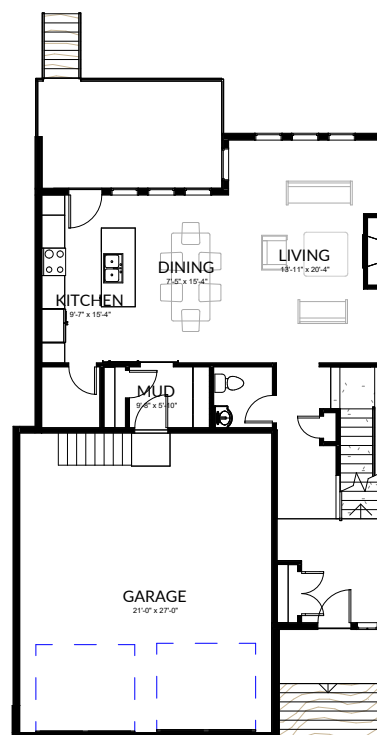
Jamilla
SINGLE FAMILY

2,386 SQ. FT. | 4 + DEN | 3.5
936 Feheregyhazi Blvd

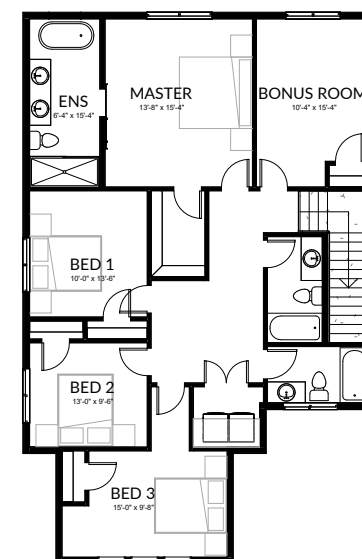




BASEMENT
982 SQ. FT
(unfinished)



MAIN FLOOR
972 SQ. FT



UPPER FLOOR
1414 SQ. FT

LOT
20

All images used are for illustrative purposes only and are intended to convey the concept and vision for the development/apartments/houses. They are for guidance only, may alter as work progresses and do not necessarily represent a true and accurate depiction of the finished product. Floor plans are intended to give a general indication of the proposed layout only. All images and dimensions are not intended to form part of any contract or warranty.

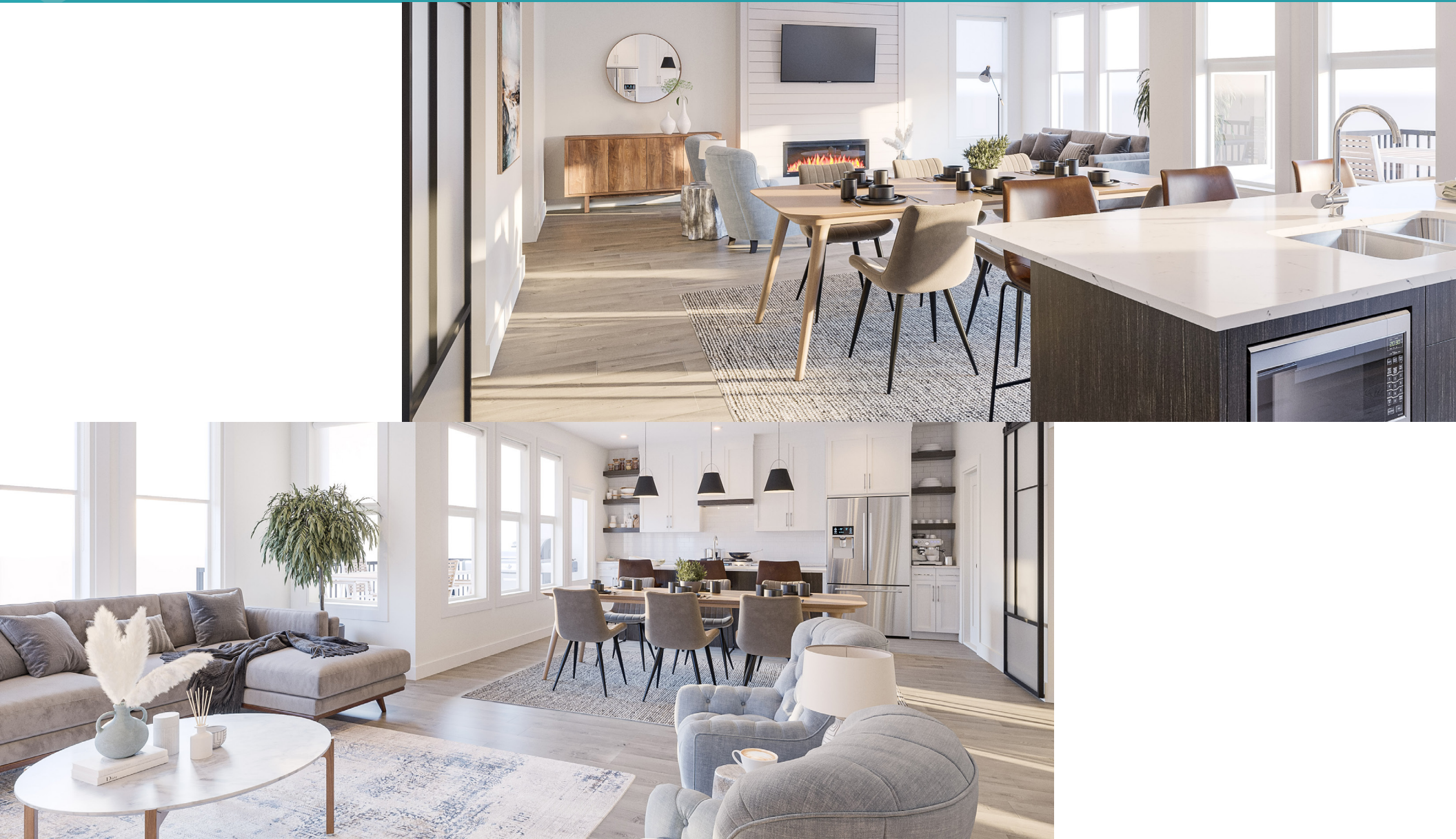
**936 Feheregyhazi Blvd,
Saskatoon, SK**



**LOT
20**

All images used are for illustrative purposes only and are intended to convey the concept and vision for the development/apartments/houses. They are for guidance only, may alter as work progresses and do not necessarily represent a true and accurate depiction of the finished product. Floor plans are intended to give a general indication of the proposed layout only. All images and dimensions are not intended to form part of any contract or warranty.

**936 Feheregyhazi Blvd,
Saskatoon, SK**



**LOT
20**

All images used are for illustrative purposes only and are intended to convey the concept and vision for the development/apartments/houses. They are for guidance only, may alter as work progresses and do not necessarily represent a true and accurate depiction of the finished product. Floor plans are intended to give a general indication of the proposed layout only. All images and dimensions are not intended to form part of any contract or warranty.

**936 Feheregyhazi Blvd,
Saskatoon, SK**



**LOT
20**

All images used are for illustrative purposes only and are intended to convey the concept and vision for the development/apartments/houses. They are for guidance only, may alter as work progresses and do not necessarily represent a true and accurate depiction of the finished product. Floor plans are intended to give a general indication of the proposed layout only. All images and dimensions are not intended to form part of any contract or warranty.

**936 Feheregyhazi Blvd,
Saskatoon, SK**



**LOT
20**

All images used are for illustrative purposes only and are intended to convey the concept and vision for the development/apartments/houses. They are for guidance only, may alter as work progresses and do not necessarily represent a true and accurate depiction of the finished product. Floor plans are intended to give a general indication of the proposed layout only. All images and dimensions are not intended to form part of any contract or warranty.

**936 Feheregyhazi Blvd,
Saskatoon, SK**



**LOT
20**

All images used are for illustrative purposes only and are intended to convey the concept and vision for the development/apartments/houses. They are for guidance only, may alter as work progresses and do not necessarily represent a true and accurate depiction of the finished product. Floor plans are intended to give a general indication of the proposed layout only. All images and dimensions are not intended to form part of any contract or warranty.

**936 Feheregyhazi Blvd,
Saskatoon, SK**



**LOT
20**

All images used are for illustrative purposes only and are intended to convey the concept and vision for the development/apartments/houses. They are for guidance only, may alter as work progresses and do not necessarily represent a true and accurate depiction of the finished product. Floor plans are intended to give a general indication of the proposed layout only. All images and dimensions are not intended to form part of any contract or warranty.

**936 Feheregyhazi Blvd,
Saskatoon, SK**

Westbow

Published date 03/17/22



**LOT
20**

All images used are for illustrative purposes only and are intended to convey the concept and vision for the development/apartments/houses. They are for guidance only, may alter as work progresses and do not necessarily represent a true and accurate depiction of the finished product. Floor plans are intended to give a general indication of the proposed layout only. All images and dimensions are not intended to form part of any contract or warranty.

 **12 MINUTES**
TO DOWNTOWN SASKATOON

 **290 HECTARES**
OF NATURAL GRASSLANDS

 **2.5 KILOMETERS**
TO EVERGREEN SHOPPING CENTRE

Get to know the scenic walking trails and continuous green space while being close to the city. Located in proximity to the core of Saskatoon, live comfortably with essential services nearby. Year round recreation surrounds this neighbourhood with Aspen Square, community centres, schools, and commercial amenities at the heart of it all.

**936 Feheregyhazi Blvd,
Saskatoon, SK**

 Westbow

Published date 03/17/22