



WESTBOW HOMES

AT ASPEN RIDGE

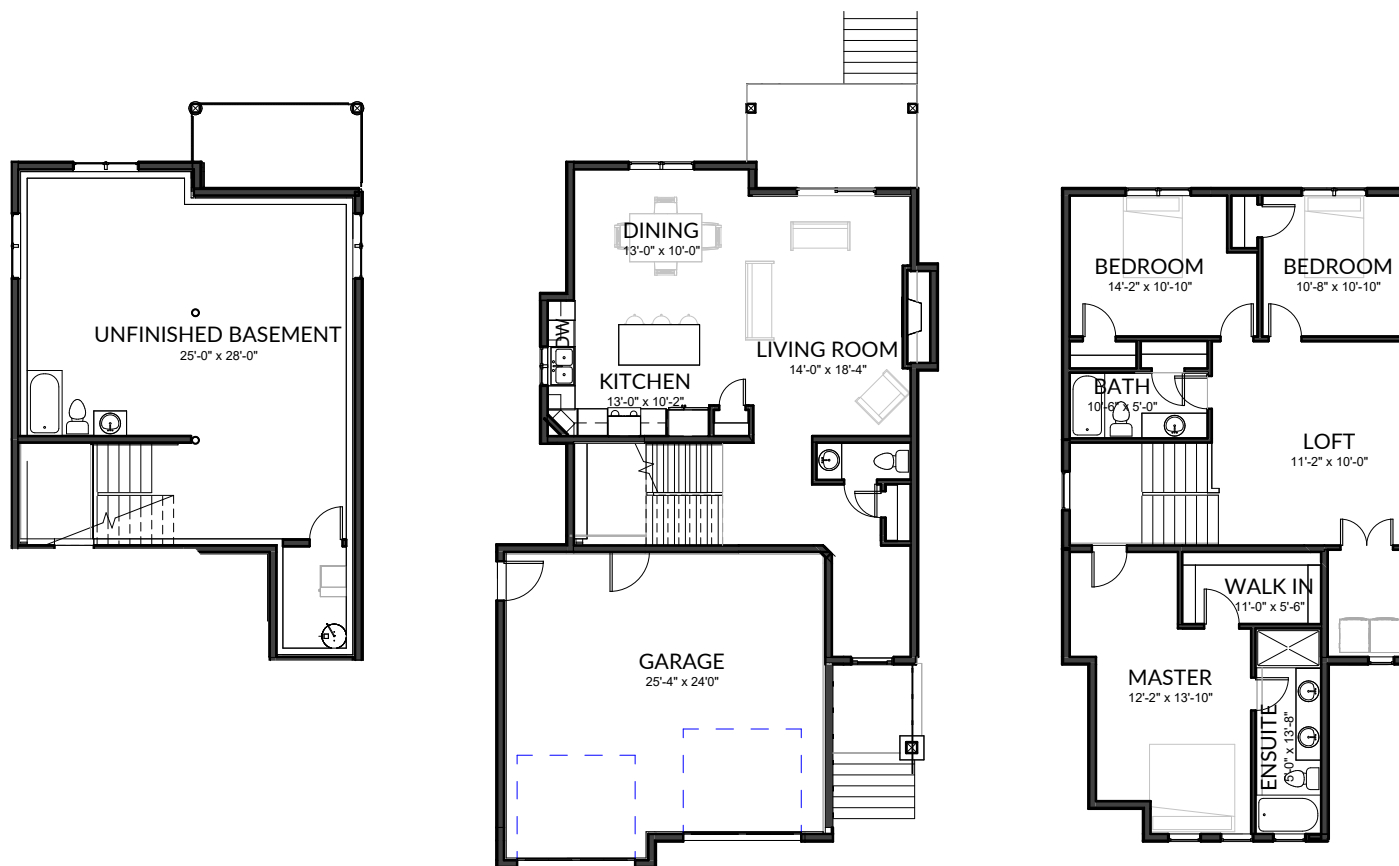
LOT
22

Miray
SINGLE FAMILY

2,074 SQ. FT. | 3 BED | 2.5 BATH

928 Feheregyhazi Blvd





BASEMENT

828 SQ. FT
(unfinished)*

MAIN FLOOR

862 SQ. FT

UPPER FLOOR

1212 SQ. FT

**Secondary suite optional*

**LOT
22**

All images used are for illustrative purposes only and are intended to convey the concept and vision for the development/apartments/houses. They are for guidance only, may alter as work progresses and do not necessarily represent a true and accurate depiction of the finished product. Floor plans are intended to give a general indication of the proposed layout only. All images and dimensions are not intended to form part of any contract or warranty.

**928 Feheregyhazi Blvd,
Saskatoon, SK**

Westbow

Published date 03/15/22



SIMILAR TO



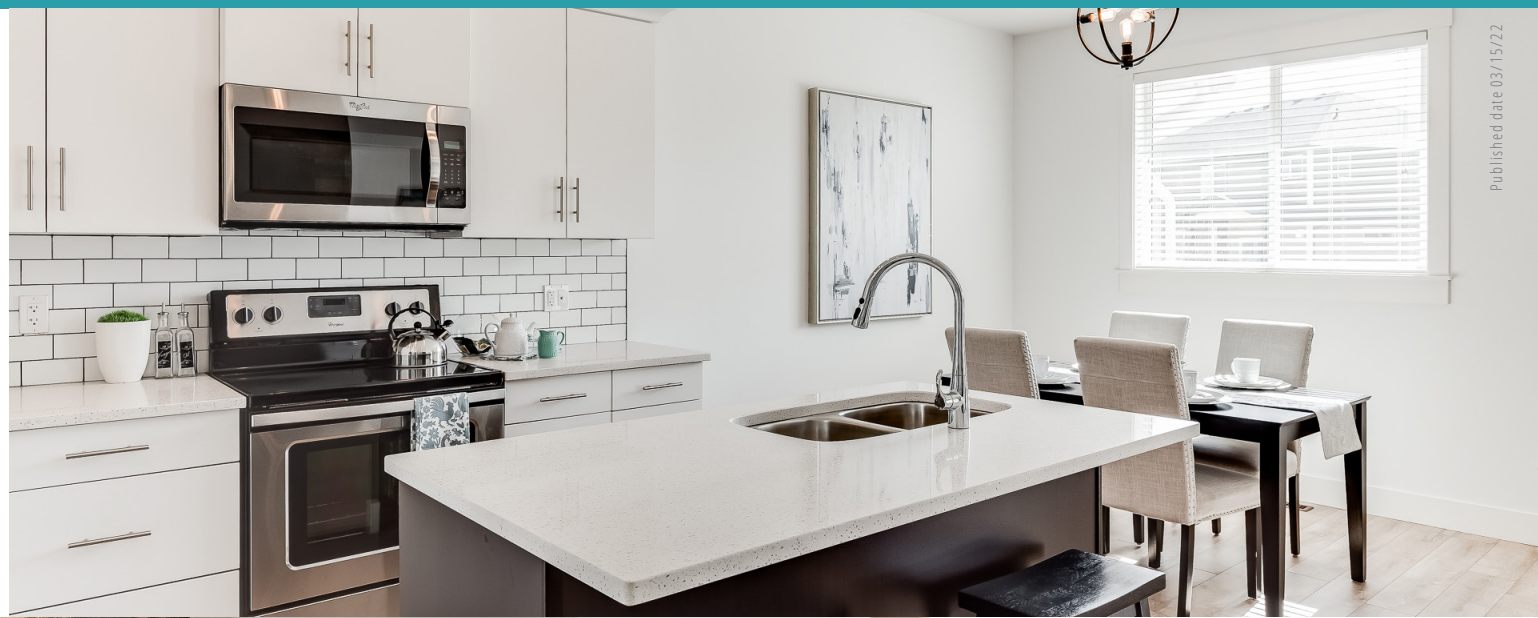
**LOT
22**

All images used are for illustrative purposes only and are intended to convey the concept and vision for the development/apartments/houses. They are for guidance only, may alter as work progresses and do not necessarily represent a true and accurate depiction of the finished product. Floor plans are intended to give a general indication of the proposed layout only. All images and dimensions are not intended to form part of any contract or warranty.

**928 Feheregyhazi Blvd,
Saskatoon, SK**

Westbow

Published date 03/15/22



Published date 03/15/22



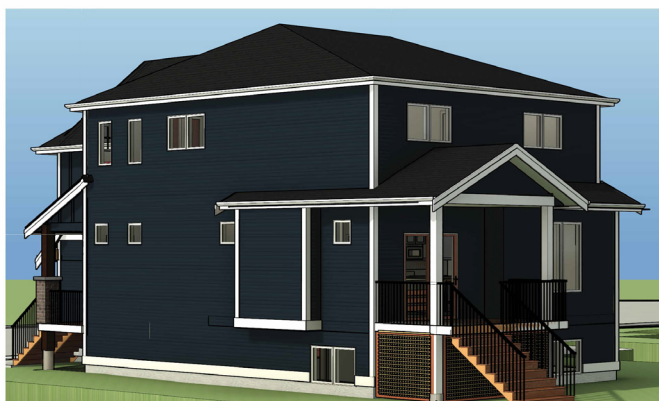
**LOT
22**

All images used are for illustrative purposes only and are intended to convey the concept and vision for the development/apartments/houses. They are for guidance only, may alter as work progresses and do not necessarily represent a true and accurate depiction of the finished product. Floor plans are intended to give a general indication of the proposed layout only. All images and dimensions are not intended to form part of any contract or warranty.

**928 Feheregyhazi Blvd,
Saskatoon, SK**

 **Westbow**

Published date 03/15/22



**LOT
22**

All images used are for illustrative purposes only and are intended to convey the concept and vision for the development/apartments/houses. They are for guidance only, may alter as work progresses and do not necessarily represent a true and accurate depiction of the finished product. Floor plans are intended to give a general indication of the proposed layout only. All images and dimensions are not intended to form part of any contract or warranty.

**928 Feheregyhazi Blvd,
Saskatoon, SK**



**LOT
22**

All images used are for illustrative purposes only and are intended to convey the concept and vision for the development/apartments/houses. They are for guidance only, may alter as work progresses and do not necessarily represent a true and accurate depiction of the finished product. Floor plans are intended to give a general indication of the proposed layout only. All images and dimensions are not intended to form part of any contract or warranty.

**928 Feheregyhazi Blvd,
Saskatoon, SK**



**LOT
22**

All images used are for illustrative purposes only and are intended to convey the concept and vision for the development/apartments/houses. They are for guidance only, may alter as work progresses and do not necessarily represent a true and accurate depiction of the finished product. Floor plans are intended to give a general indication of the proposed layout only. All images and dimensions are not intended to form part of any contract or warranty.

**928 Feheregyhazi Blvd,
Saskatoon, SK**

Westbow

Published date 03/15/22



**LOT
22**

All images used are for illustrative purposes only and are intended to convey the concept and vision for the development/apartments/houses. They are for guidance only, may alter as work progresses and do not necessarily represent a true and accurate depiction of the finished product. Floor plans are intended to give a general indication of the proposed layout only. All images and dimensions are not intended to form part of any contract or warranty.

**928 Feheregyhazi Blvd,
Saskatoon, SK**

Westbow

Published date 03/15/22



 **12 MINUTES**
TO DOWNTOWN SASKATOON

 **290 HECTARES**
OF NATURAL GRASSLANDS

 **2.5 KILOMETERS**
TO EVERGREEN SHOPPING CENTRE

Get to know the scenic walking trails and continuous green space while being close to the city. Located in proximity to the core of Saskatoon, live comfortably with essential services nearby. Year round recreation surrounds this neighbourhood with Aspen Square, community centres, schools, and commercial amenities at the heart of it all.

**LOT
22**

All images used are for illustrative purposes only and are intended to convey the concept and vision for the development/apartments/houses. They are for guidance only, may alter as work progresses and do not necessarily represent a true and accurate depiction of the finished product. Floor plans are intended to give a general indication of the proposed layout only. All images and dimensions are not intended to form part of any contract or warranty.

**928 Feheregyhazi Blvd,
Saskatoon, SK**