



# WESTBOW HOMES

AT ASPEN RIDGE

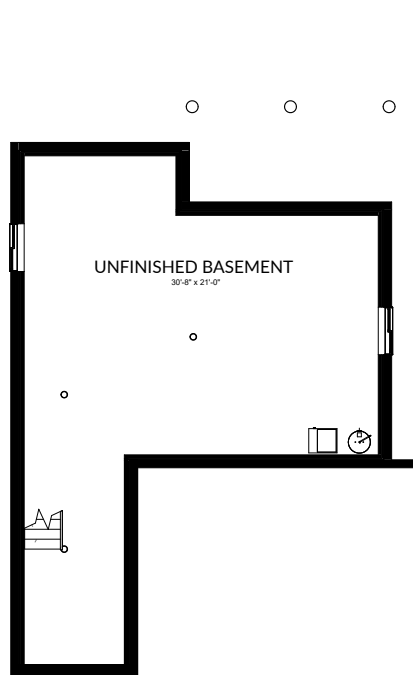
LOT  
23

Jamilla  
SINGLE FAMILY

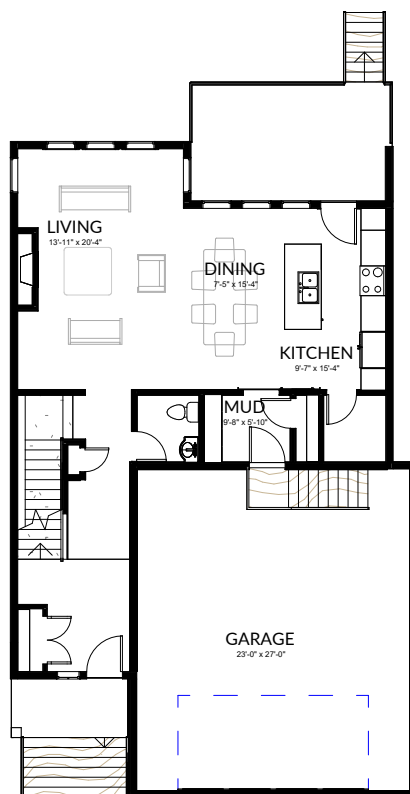
2,371 SQ. FT. | 4 + DEN 3.5

924 Feheregyhazi Blvd

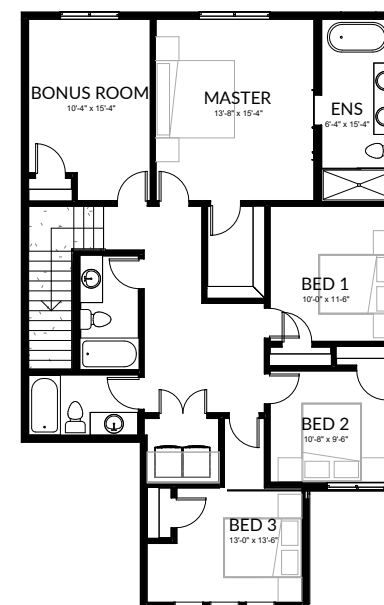




**BASEMENT**  
980 SQ. FT  
(unfinished)



**MAIN FLOOR**  
977 SQ. FT



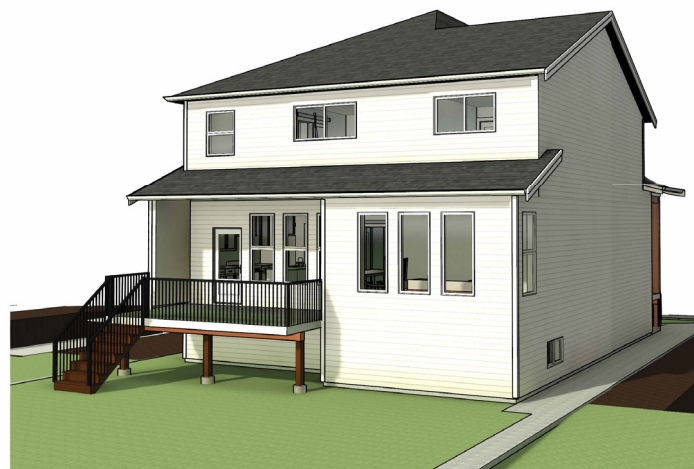
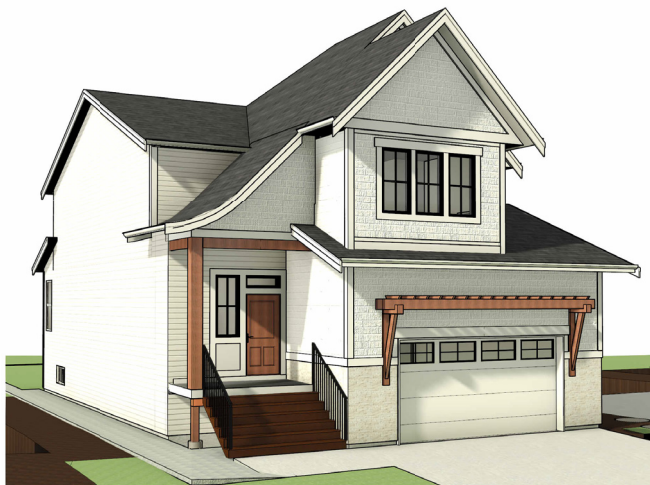
**UPPER FLOOR**  
1394 SQ. FT

**LOT**  
**23**

*All images used are for illustrative purposes only and are intended to convey the concept and vision for the development/apartments/houses. They are for guidance only, may alter as work progresses and do not necessarily represent a true and accurate depiction of the finished product. Floor plans are intended to give a general indication of the proposed layout only. All images and dimensions are not intended to form part of any contract or warranty.*

**924 Feheregyhazi Blvd,  
Saskatoon, SK**





**LOT**  
**23**

*All images used are for illustrative purposes only and are intended to convey the concept and vision for the development/apartments/houses. They are for guidance only, may alter as work progresses and do not necessarily represent a true and accurate depiction of the finished product. Floor plans are intended to give a general indication of the proposed layout only. All images and dimensions are not intended to form part of any contract or warranty.*

**924 Feheregyhazi Blvd,  
Saskatoon, SK**



**LOT**  
**23**

*All images used are for illustrative purposes only and are intended to convey the concept and vision for the development/apartments/houses. They are for guidance only, may alter as work progresses and do not necessarily represent a true and accurate depiction of the finished product. Floor plans are intended to give a general indication of the proposed layout only. All images and dimensions are not intended to form part of any contract or warranty.*

**924 Feheregyhazi Blvd,  
Saskatoon, SK**





Newport Colour Scheme

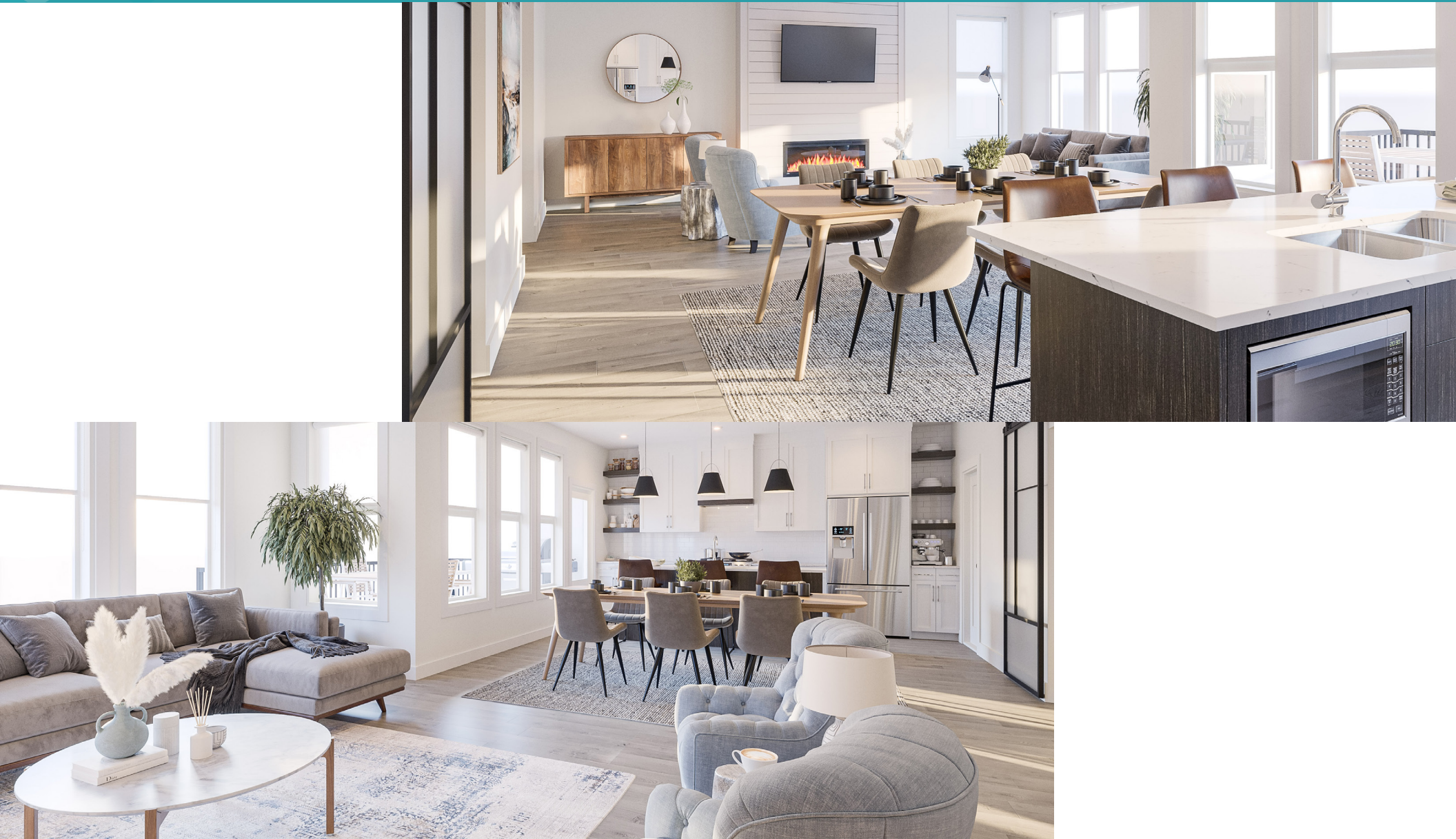


**LOT**  
**23**

All images used are for illustrative purposes only and are intended to convey the concept and vision for the development/apartments/houses. They are for guidance only, may alter as work progresses and do not necessarily represent a true and accurate depiction of the finished product. Floor plans are intended to give a general indication of the proposed layout only. All images and dimensions are not intended to form part of any contract or warranty.

**924 Feheregyhazi Blvd,  
Saskatoon, SK**

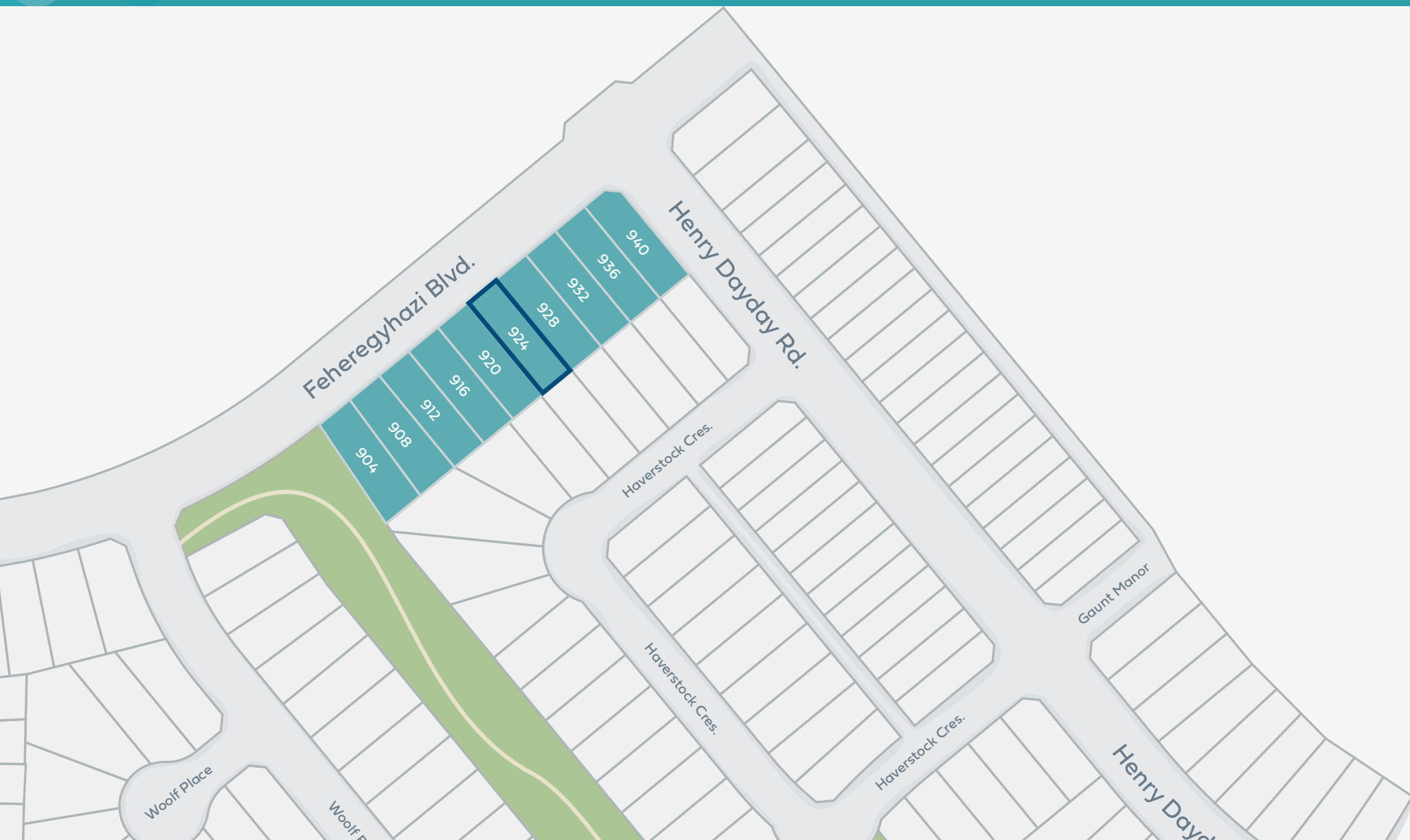




**LOT  
23**

*All images used are for illustrative purposes only and are intended to convey the concept and vision for the development/apartments/houses. They are for guidance only, may alter as work progresses and do not necessarily represent a true and accurate depiction of the finished product. Floor plans are intended to give a general indication of the proposed layout only. All images and dimensions are not intended to form part of any contract or warranty.*

**924 Feheregyhazi Blvd,  
Saskatoon, SK**



**LOT  
23**

*All images used are for illustrative purposes only and are intended to convey the concept and vision for the development/apartments/houses. They are for guidance only, may alter as work progresses and do not necessarily represent a true and accurate depiction of the finished product. Floor plans are intended to give a general indication of the proposed layout only. All images and dimensions are not intended to form part of any contract or warranty.*

**924 Feheregyhazi Blvd,  
Saskatoon, SK**



**LOT  
23**

All images used are for illustrative purposes only and are intended to convey the concept and vision for the development/apartments/houses. They are for guidance only, may alter as work progresses and do not necessarily represent a true and accurate depiction of the finished product. Floor plans are intended to give a general indication of the proposed layout only. All images and dimensions are not intended to form part of any contract or warranty.

**924 Feheregyhazi Blvd,  
Saskatoon, SK**

**Westbow**

Published date 03/22/22





 **12 MINUTES**  
TO DOWNTOWN SASKATOON

 **290 HECTARES**  
OF NATURAL GRASSLANDS

 **2.5 KILOMETERS**  
TO EVERGREEN SHOPPING CENTRE

Get to know the scenic walking trails and continuous green space while being close to the city. Located in proximity to the core of Saskatoon, live comfortably with essential services nearby. Year round recreation surrounds this neighbourhood with Aspen Square, community centres, schools, and commercial amenities at the heart of it all.

**LOT**  
**23**

*All images used are for illustrative purposes only and are intended to convey the concept and vision for the development/apartments/houses. They are for guidance only, may alter as work progresses and do not necessarily represent a true and accurate depiction of the finished product. Floor plans are intended to give a general indication of the proposed layout only. All images and dimensions are not intended to form part of any contract or warranty.*

**924 Feheregyhazi Blvd,  
Saskatoon, SK**



*Published date 03/22/22*