



WESTBOW HOMES

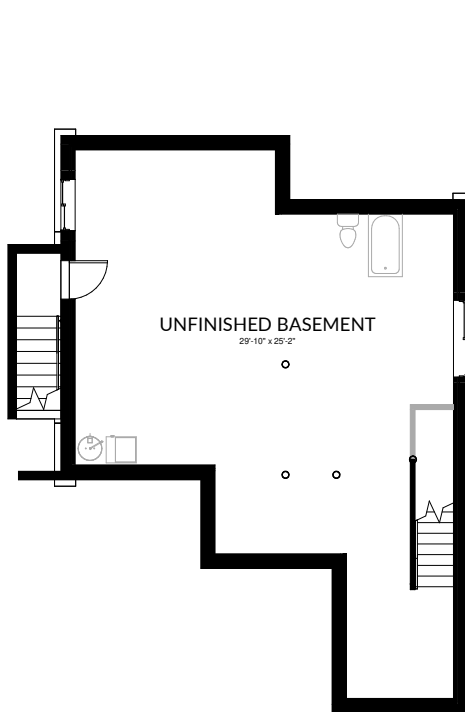
AT ASPEN RIDGE

LOT
28

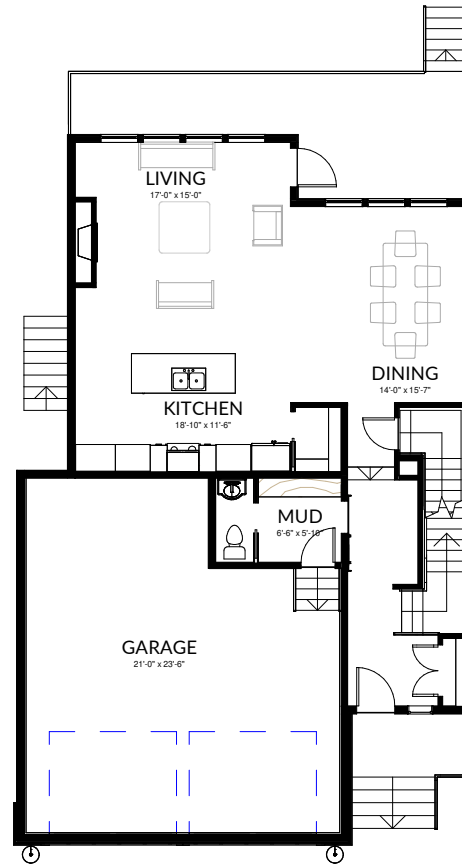
Janessa
SINGLE FAMILY

2,431 SQ. FT. | 5 BED | 3.5 BATH
904 Feheregyhazi Blvd

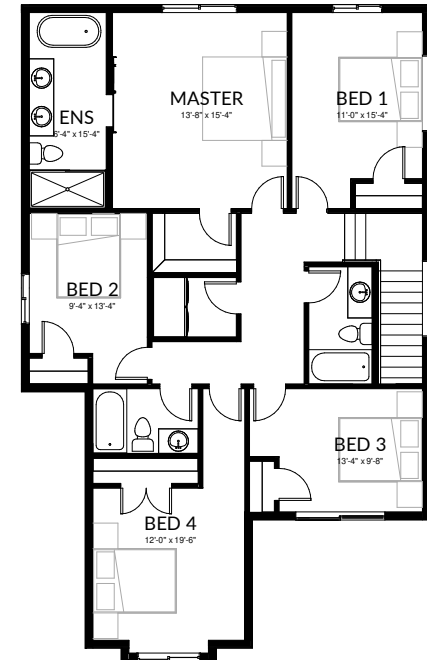




BASEMENT
1051 SQ. FT
(unfinished)



MAIN FLOOR
1050 SQ. FT



UPPER FLOOR
1381 SQ. FT

LOT
28

All images used are for illustrative purposes only and are intended to convey the concept and vision for the development/apartments/houses. They are for guidance only, may alter as work progresses and do not necessarily represent a true and accurate depiction of the finished product. Floor plans are intended to give a general indication of the proposed layout only. All images and dimensions are not intended to form part of any contract or warranty.

904 Feheregyhazi Blvd,
Saskatoon, SK



Published date 10/13/22

**LOT
28**

All images used are for illustrative purposes only and are intended to convey the concept and vision for the development/apartments/houses. They are for guidance only, may alter as work progresses and do not necessarily represent a true and accurate depiction of the finished product. Floor plans are intended to give a general indication of the proposed layout only. All images and dimensions are not intended to form part of any contract or warranty.

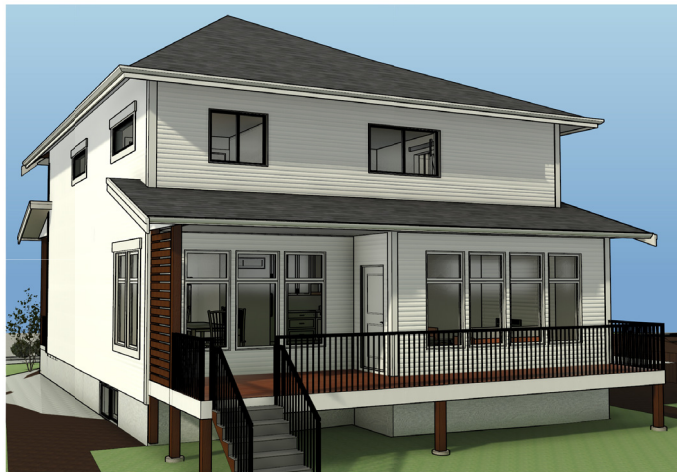
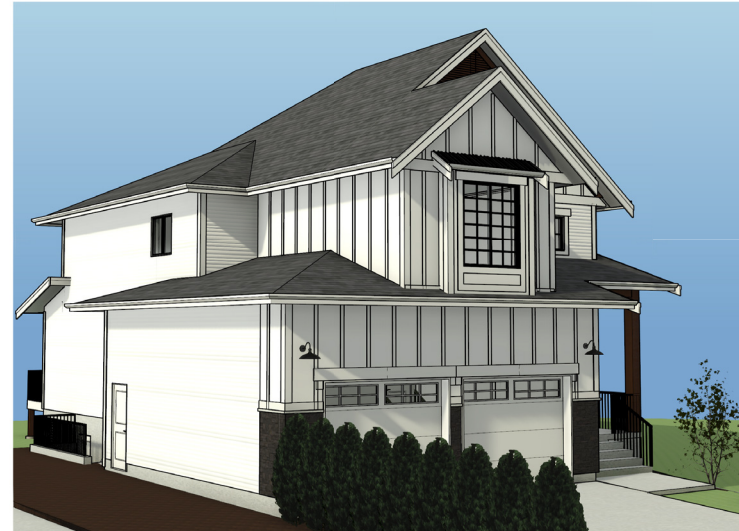
**904 Feheregyhazi Blvd,
Saskatoon, SK**



LOT
28

All images used are for illustrative purposes only and are intended to convey the concept and vision for the development/apartments/houses. They are for guidance only, may alter as work progresses and do not necessarily represent a true and accurate depiction of the finished product. Floor plans are intended to give a general indication of the proposed layout only. All images and dimensions are not intended to form part of any contract or warranty.

904 Feheregyhazi Blvd,
Saskatoon, SK



LOT
28

All images used are for illustrative purposes only and are intended to convey the concept and vision for the development/apartments/houses. They are for guidance only, may alter as work progresses and do not necessarily represent a true and accurate depiction of the finished product. Floor plans are intended to give a general indication of the proposed layout only. All images and dimensions are not intended to form part of any contract or warranty.

904 Feheregyhazi Blvd,
Saskatoon, SK



LOT
28

All images used are for illustrative purposes only and are intended to convey the concept and vision for the development/apartments/houses. They are for guidance only, may alter as work progresses and do not necessarily represent a true and accurate depiction of the finished product. Floor plans are intended to give a general indication of the proposed layout only. All images and dimensions are not intended to form part of any contract or warranty.

904 Feheregyhazi Blvd,
Saskatoon, SK

- PHASE 1
- PARK
- TRAILS

WESTBOW HOMES
AT ASPEN RIDGE



**LOT
28**

All images used are for illustrative purposes only and are intended to convey the concept and vision for the development/apartments/houses. They are for guidance only, may alter as work progresses and do not necessarily represent a true and accurate depiction of the finished product. Floor plans are intended to give a general indication of the proposed layout only. All images and dimensions are not intended to form part of any contract or warranty.

**904 Feheregyhazi Blvd,
Saskatoon, SK**



- PHASE 1
- COMMUNITY AMENITIES
- PARK
- TRAILS
- RETAIL & COMMERCIAL

LOT 28

All images used are for illustrative purposes only and are intended to convey the concept and vision for the development/apartments/houses. They are for guidance only, may alter as work progresses and do not necessarily represent a true and accurate depiction of the finished product. Floor plans are intended to give a general indication of the proposed layout only. All images and dimensions are not intended to form part of any contract or warranty.

**904 Feheregyhazi Blvd,
Saskatoon, SK**



 **12 MINUTES**
TO DOWNTOWN SASKATOON

 **290 HECTARES**
OF NATURAL GRASSLANDS

 **2.5 KILOMETERS**
TO EVERGREEN SHOPPING CENTRE

Get to know the scenic walking trails and continuous green space while being close to the city. Located in proximity to the core of Saskatoon, live comfortably with essential services nearby. Year round recreation surrounds this neighbourhood with Aspen Square, community centres, schools, and commercial amenities at the heart of it all.

**LOT
28**

All images used are for illustrative purposes only and are intended to convey the concept and vision for the development/apartments/houses. They are for guidance only, may alter as work progresses and do not necessarily represent a true and accurate depiction of the finished product. Floor plans are intended to give a general indication of the proposed layout only. All images and dimensions are not intended to form part of any contract or warranty.

**904 Feheregyhazi Blvd,
Saskatoon, SK**



Published date 10/13/22